

# INDIAN NOTICES TO MARINERS

EDITION NO. 08 DATED 16 APR 2023

(CONTAINS NOTICES 081 TO 089)



REACH US 24 x 7



[msis-inho@navy.gov.in](mailto:msis-inho@navy.gov.in)  
[inho@navy.gov.in](mailto:inho@navy.gov.in)



+91-135-2748373



National Hydrographic Office  
107-A, Rajpur Road  
Dehradun – 248001  
INDIA



Commander (H)  
Maritime Safety Information Services  
+91- 135 - 2746290-117

WWW

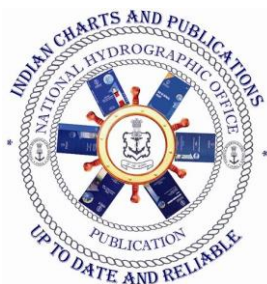
[www.hydrobharat.gov.in](http://www.hydrobharat.gov.in)

## CONTENTS

| <u>Section No.</u> | <u>Title</u>                                       |
|--------------------|--|
| I                  | List of Charts Affected                            |
| II                 | Permanent Notices                                  |
| III                | Temporary and Preliminary Notices                  |
| IV                 | Marine Information                                 |
| V                  | NAVAREA VIII Warnings in force                     |
| VI                 | Corrections to Sailing Directions                  |
| VII                | Corrections to List of Lights                      |
| VIII               | Corrections to List of Radio Signals               |
| IX                 | Corrections to Miscellaneous Nautical Publications |
| X                  | Reporting of Navigational Dangers                  |

(PUBLISHED ON NHO WEBSITE ON 1<sup>ST</sup> & 16<sup>TH</sup> OF EVERY MONTH)

**FEEDBACK:** [msis-inho@navy.gov.in](mailto:msis-inho@navy.gov.in)



INSIST ON INDIAN CHARTS AND  
PUBLICATIONS  
Original, Authentic and Up-to-Date



© Govt. of India Copyright

No permission is required to make copies of these Notices. However, such copies are not to be commercially sold.

## II

### MARINER'S OBLIGATION AND A CHART MAKER'S PLEA

Observing changes at sea proactively and reporting them promptly to the concerned charting agency, is an obligation that all mariners owe to the entire maritime community towards SOLAS. Mariners are requested to notify the Chief Hydrographer to the Government of India at the above mentioned address/fax number/ E mail address immediately on discovering new or suspected dangers to navigation, changes/ defects pertaining to navigational aids, and shortcomings in Indian charts/ publications. The Hydrographic Note [Form IH – 102] is a convenient form to notify such changes. Specimen form is attached at Section IX with this notice. Also visit our website for downloading and filling up instructions for Hydrographic Note.

**Chief Hydrographer  
to the Government of India**

### **WARNING AGAINST USE OF COUNTERFEIT PRODUCTS**

**All mariners are cautioned against the use of counterfeit copies of IN Charts and publications. Navigational Charts produced after 31 Oct 14 carry NHO crest as watermark on the reverse with backslip. Chart Agent's stamp is mandatory on all Charts.**

**Counterfeit products may have errors resulting in potential risks. The same are not approved by inspecting agencies and do not satisfy the carriage requirements of SOLAS chapter V.**

**Mariners are strongly advised not to use or encourage the use of counterfeit charts and publications. Failure to comply with the warning may invite legal action.**

### III

## **EXPLANATORY NOTES**

**Corrections to Charts and Publications.** Section I comprises List of Charts affected by the notices contained in this edition. Whereas sections II and III contain information for correcting the charts and publications. Mariners should insist on corrected charts from their chart distributors/agents.

- (a) Geographical positions given are in the horizontal datum of the current edition of the chart, unless otherwise stated.
- (b) Bearings are true, reckoned clockwise from 000° to 359°. Bearings to lights are from seaward.
- (c) Symbols referred to, are those shown on the chart 5020 (INT 1).
- (d) Alterations to depth contours, deletion of depths to make way for new detail, etc; are not normally mentioned, unless they have some navigational significance.
- (e) Blocks and notes, if any, accompanying the Notices in Sections II and III are placed after Section IX.

**Temporary and Preliminary Notices.** These are indicated by (T) and (P) respectively after the Notice number and are placed in Section III. SI Nos. of those in force are published quarterly on 01 Jan, 01 Apr, 01 Jul and 01 Oct, and their text is published in Annual Edition of Indian Notices to Mariners. They should be inserted in pencil, by the user, on receipt.

**Source of Information.** A star preceding the number of a Notice indicates that the notice is promulgated by INHO based on original information received.

**Sailing Directions.** Corrections for the Sailing Directions (Pilots) are given in Section VI.

**Lights.** Corrections to Indian List of Lights are given in Section VII, where affected Light List number is quoted.

- (a) These corrections should be incorporated as per instructions given on page XI of the List of Lights.
- (b) Such correction notices to list of lights may be published in either an earlier or a later Edition of N to M than the Edition containing the Notice to the chart correction.
- (c) The range of a light given is its nominal range. Its geographical range is given in parenthesis only if it is less than the nominal range.
- (d) A star indicates that the corresponding field is to be amended and all stars indicate that new light is to be inserted.

**Radio Signals.** The corrections in Section VIII should be cut and pasted in the appropriate volume of the List of Radio Signals.

**Radio Navigational Warnings.**

- (a) These are broadcast as serially numbered NAVAREA warnings by the concerned NAVAREA coordinator through GMDSS and Area Radio Broadcasts.
- (b) They contain important information affecting navigational safety, which cannot await the publication of the next edition of N to M.
- (c) It should be borne in mind that they may be based on reports which cannot always be verified before promulgation.
- (d) It is therefore necessary to be selective, and promulgate only the more important warnings to avoid over loading users; the less important information is included in the forthcoming edition of N to M or the Chart/Publication concerned.

## IV

**Laws and Regulations.** While in the interest of the safety of shipping, the Hydrographic Office makes every endeavor to include in its publications details of the laws and regulations of all countries pertaining to navigation, it must be clearly understood: -

- (a) That no liability whatsoever can be accepted for failure to publish details of any particular law or regulation and
- (b) That publication of details of a law or regulation is solely for the safety and convenience of shipping and implies no recognition of the International validity of the law or regulation.

**Correction of Charts and Publications by the Users.** Notices to Mariners contain important information concerning safety of navigation at sea, hence, they should be used to keep the specified charts and publications up-to-date.

**Reliance on Charts and Associated Publications.** While every effort is made by the Hydrographic Office to ensure the accuracy of the information on Charts and Publications before they are published, it should be appreciated that it may not always be complete and up-to-date. The mariner must be the final judge for the reliance he can place on the information available, bearing in mind his particular circumstances, local pilotage guidance and judicious use of available navigational aids.

**Use of Global Positioning System (WGS 84) positions.**

- (a) The positions of hydrographic objects shown on some of the Indian charts and publications are in Everest datum. However, the positions of vessels obtained from Global Positioning System (GPS) are on World Geodetic System 1984 datum. There will always exist difference in the position values obtained by visual fixing (Everest Datum) and GPS position (WGS 84 datum).
- (b) Wherever these differences have been ascertained, their average values are published as a Cautionary Note on the chart concerned, as shifts in Latitude and Longitude. Whilst plotting GPS positions on charts, the shift values as given on the chart must be applied, before making any assessment of the navigational situation vis-à-vis the other charted information.
- (c) These datum shift values are not uniform, particularly in areas off Andaman and Nicobar and Lakshadweep Islands, as these places are not linked to mainland network (Everest datum). Mariners are advised to use alternate source of position information such as Visual or Radar, particularly when closing the shore or navigating in the vicinity of dangers.

**Source Data on Charts.** All Indian charts contain specific information on their source of hydrographic data. In areas where the source data is very old, incomplete and less reliable, the mariner must use such charts with prudence. Mariner should always use the largest scale charts available for the area. Apart from being the most detailed, the larger scale charts are usually corrected first. Hydrographic information may be sparse on small scale charts. On such charts, a charted shoal may be in error as regards position, least depth and extent. Uncharted dangers may also exist, particularly in areas away from well-established routes. Mariners must exercise due caution.

**Further Guidance.** The Mariner's Hand Book (NP 100) gives full explanation on the use of charts and the type of information contained on charts. In their own interest, all users of charts should refer to it.

## **NEWLY PUBLISHED INDIAN CHARTS, ENC's AND PUBLICATION**

1. The new Indian Charts that is available for mariners in the market is as follows:-

| <i>Chart No.</i> | <i>Date of Publication</i> | <i>Title, Limits &amp; Description</i> | <i>Scale</i> | <i>Folio</i> | <i>Price</i> |
|------------------|----------------------------|--|--------------|--------------|--------------|
| 3007             | 15-01- 2023                | NAGAPATTINAM ANCHORAGE                 | 35000        | 5            | Rs. 2000.00  |

2. The new edition Indian Charts that are available for mariners in the market are as follows:-

| <i>Chart No.</i> | <i>Date of Publication</i> | <i>Title, Limits &amp; Description</i> | <i>Scale</i> | <i>Folio</i> | <i>Price</i> |
|------------------|----------------------------|--|--------------|--------------|--------------|
| -NIL-            |                            |  |              |              |              |

3. The Indian Chart that is permanently withdrawn is as follows:-

| <i>Chart No.</i> | <i>Date of Publication</i> | <i>Title</i>           | <i>On Publication of New Chart/ Edition</i> | <i>Date of Publication</i> |
|------------------|----------------------------|------------------------|---|----------------------------|
| 3007             | 30-11-2012                 | NAGAPATTINAM ANCHORAGE | New Edition                                 | 15-01-2023                 |

4. The new Indian Electronic Navigational Charts that are available for mariners in the market are as follows:-

| <i>ENC Cell Name</i> | <i>Chart No.</i> | <i>Title</i>           | <i>Issue Date</i> |
|----------------------|------------------|------------------------|-------------------|
| IN53007B             | 3007             | NAGAPATTINAM ANCHORAGE | 13-04-2023        |
| IN53033B             | 3033             | KARAIKAL ANCHORAGE     | 13-04-2023        |

5. The new edition Indian Electronic Navigational Charts that are available for mariners in the market are as follows:-

| <i>ENC Cell Name</i> | <i>Chart No.</i> | <i>Title</i>          | <i>Issue Date</i> |
|----------------------|------------------|-----------------------|-------------------|
| IN3216BA             | 216              | BELEKERI TO KUNDAPURA | 10-04-2023        |
| IN62010N             | 2010             | KARWAR NAVAL HARBOUR  | 11-04-2023        |
| IN62120K             | 2120             | KARWAR PORT           | 10-04-2023        |
| IN63033R             | 3033             | KARAIKAL PORT         | 12-04-2023        |

6. The Indian Electronic Navigational Charts that are permanently withdrawn are as follows:-

| <i>ENC Cell Name</i> | <i>Chart No.</i> | <i>Title</i>           | <i>Issue Date</i> |
|----------------------|------------------|------------------------|-------------------|
| IN53007G             | 3007             | NAGAPATTINAM ANCHORAGE | 13-03-2013        |
| IN53033K             | 3033             | KARAIKAL ANCHORAGE     | 26-08-2016        |

## VI

7. The forthcoming Indian Charts are as follows:-

| <i>Chart No</i> | <i>Title</i>                      | <i>Scale</i> | <i>Remarks</i>     |
|-----------------|-----------------------------------|--------------|--------------------|
| <b>2025</b>     | <b>RELIANCE TANKER BERTHS</b>     | <b>7500</b>  | <b>New Chart</b>   |
| <b>2508</b>     | <b>AGALEGA JETTY</b>              | <b>5000</b>  | <b>New Chart</b>   |
| <b>4006</b>     | <b>PORT BLAIR</b>                 | <b>15000</b> | <b>New Edition</b> |
| <b>4012</b>     | <b>PORT BLAIR – INNER HARBOUR</b> | <b>5000</b>  | <b>New Edition</b> |

### Availability of ENC's

The complete folios of Official Indian ENC's are distributed worldwide through JEPPESEN MARINE (formerly C-MAP), UKHO and Norwegian Hydrographic Service. UKHO distributes Indian ENC's through the worldwide network of their agents and distributors. Updates are also made available as per the existing policy of the distributor. Mariners and other ENC users may contact the under mentioned for further details:

|  |  |
|--|--|
| <b>United Kingdom Hydrographic Office</b><br>Admiralty Way, Taunton, Somerset<br>TA1 2DN, UK<br>Tel : +44 (0) 1823 337900<br>Fax : +44 (0) 1823 330561, 1823 284077<br>Web site : <a href="http://www.hydro.gov.uk">www.hydro.gov.uk</a>   | <b>M/s IIC Technologies Limited</b><br>B-2-350/5/B-22, Road No. 3<br>Banjara Hills, Hyderabad - 500 034<br>Telangana<br>Tel: +91 4039144444<br>Fax: +91 4039144455<br>Email: <a href="mailto:somnath.marthi@iictechnologies.com">somnath.marthi@iictechnologies.com</a><br>Web: <a href="http://www.iictechnologies.com">www.iictechnologies.com</a> |
| <b>M/s Primar</b><br>Norwegian Hydrographic Service,<br>Postbox 60, 4001 Stavanger<br>Norway<br>Telephone - +47 - 51 85 87 00<br>Fax - + 47 - 51 85 87 08<br>E-mail: <a href="mailto:data@ecc.no">data@ecc.no</a><br>Website: - <a href="http://www.primar.org">www.primar.org</a> |  |

**SECTION – I**

The list of charts affected by the Notices 081 to 089 contained in this edition is as follows:-

| CHART NUMBER   | FOLIO NO. | NOTICE NO.             |
|----------------|-----------|------------------------|
| 21             | 2         | 081, 089 (T)           |
| 22 (INT 752)   | 3         | 081,                   |
| 31 (INT 756)   | 5         | 082,089 (T)            |
| 32 (INT 754)   | 5         | 082, 084, 085, 089 (T) |
| 33 (INT 755)   | 5         | 084, 089 (T)           |
| 225            | 5         | 085                    |
| 263 (INT 7383) | 5         | 085                    |
| 264            | 5         | 085                    |
| 291            | 2         | 089 (T)                |
| 292 (INT 7021) | 2         | 081                    |
| 293 (INT 7022) | 3         | 081                    |
| 315            | 5         | 089 (T)                |
| 316            | 5         | 089 (T)                |
| 351 (INT 7419) | 5         | 082                    |
| 357 (INT 7397) | 5         | 088                    |
| 358 (INT 7394) | 5         | 084, 089 (T)           |
| 3033           | 5         | 087                    |
| 4186           | 6         | 083                    |
| 7070 (INT 70)  | 1         | 089 (T)                |
| 7071 (INT 71)  | 1         | 089 (T)                |
| 7072 (INT 71)  | 1         | 089 (T)                |
| 7073 (INT 71)  | 1         | 089 (T)                |
| 7508 (INT 508) | 1         | 089 (T)                |
| 7701 (INT 701) | 1         | 089 (T)                |
| 7702 (INT 702) | 1         | 089 (T)                |
| 7703 (INT 703) | 1         | 086, 089 (T)           |
| 7705 (INT 705) | 1         | 089 (T)                |
| 7706 (INT 706) | 1         | 089 (T)                |
| 7707 (INT 707) | 1         | 089 (T)                |
| 7708 (INT 708) | 1         | 089 (T)                |

**SECTION – II****PERMANENT NOTICES****\*081 (08/23) INDIA – WEST COAST – Mumbai to Karwar – Wreck.**

Source: MRCC, Mumbai.

**Chart 21** [previous update 071/23]Insert  PA

18° 12′.48N., 069° 44′.54E.

**Chart 22 (INT 752)** [previous update 073/23]Insert  PA

18° 12′.48N., 069° 44′.54E.

**Chart 292 (INT 7021)** [previous update 166/22]Insert  PA

18° 12′.48N., 069° 44′.54E.

**Chart 293 (INT 7022)** [previous update 073/23]Insert  PA

18° 12′.48N., 069° 44′.54E.

**\*082 (08/23) INDIA – EAST COAST – Paradip to Pussur River – Wreck.**

Source: CG RHQ (NE)/CSO(OPS).

**Chart 31** [previous update 063/23]Insert  PA

20° 49′.00N., 087° 16′.00E.

**Chart 351 (INT 7419)** [previous update 049/23]Insert  PA

20° 49′.00N., 087° 16′.00E.

**\*083 (08/23) INDIA – ANDAMAN SEA – ANDAMAN ISLANDS – Barren Island – Wreck.**

Source: HQANC/COO(MAR OPS)

**Chart 4186** [previous update NC 29 FEB 2020]Insert  PA

13° 27′.00N., 094° 15′.00E.

**\*084 (08/23) INDIA AND SRI LANKA – Approaches to Palk Bay – Wreck.**

Source: MRCC, Colombo.

**Chart 33 (INT 755)** [previous update 143/22]Insert  PA

09° 16′.35N., 080° 49′.49E.

**Chart 32 (INT 754)** [previous update 072/23]Insert  PA

09° 16′.35N., 080° 49′.49E.

**Chart 358 (INT 7394)** [previous update 182/22]Insert  PA

09° 16′.35N., 080° 49′.49E.



**\*085 (08/23) SRI LANKA – INDIA – WEST COAST – Colombo to Galle – Wreck.**

Source: Sri Lanka Navy Hydrographic Service

**Chart 32 (INT 754)** [previous update 084/23]Delete  06° 57'·20N., 079° 48'·90E.**Chart 263 (INT 7383)** [previous update 189/22]Delete  06° 57'·20N., 079° 48'·90E.**Chart 264** [previous update 164/22] [Everest Datum]Delete  06° 57'·18N., 079° 48'·79E.**Chart 225** [previous update 189/22] [Everest Datum]Delete  06° 57'·18N., 079° 48'·78E.**\*086 (08/23) INDIAN OCEAN – Northern Part – Wreck.**

Source: MRCC, Mumbai.

**Chart 7703 (INT 703)** [previous update NC 31 DEC 2018]Insert  PA 07° 55'·00N., 068° 39'·00E.**\*087 (08/23) INDIA – EAST COAST – Karaikal Port – Accompanying Block.**

Source: NHO, Dehradun.

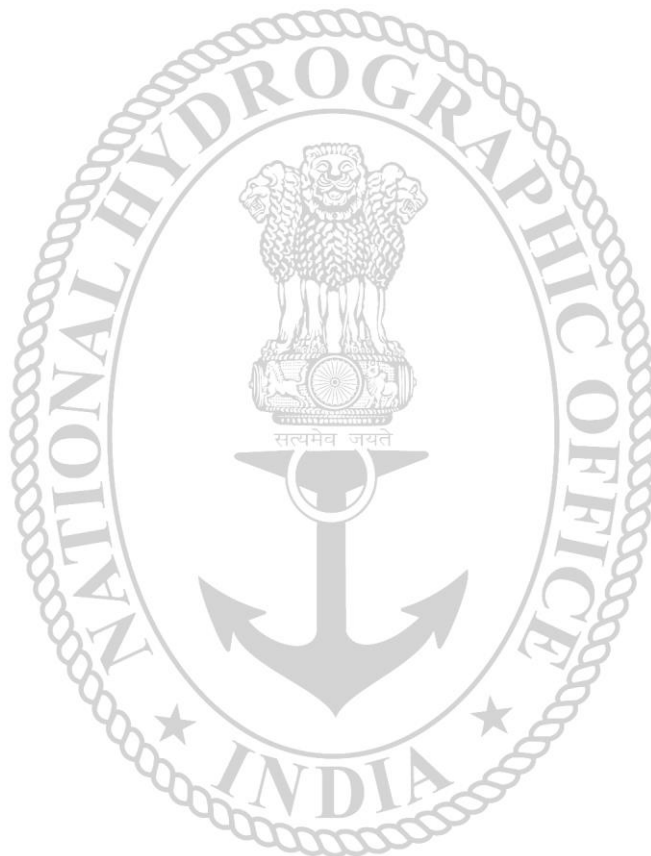
**Chart 3033 (Karaikal Port)** [previous update 054/22]

Insert accompanying block, centered on; 10° 49'·74N., 079° 51'·18E.

**Chart 3033 (Karaikal Anchorage)** [previous update 054/22]

Insert accompanying block, centered on; 10° 51'·50N., 079° 49'·60E.

| *088 (08/23)           | Miscellaneous updates to charts. |  |
|------------------------|----------------------------------|--|
| Source: NHO, Dehradun. |                                  |  |
| Chart No.              | Previous Updates                 | Details  |
| 357 (INT 7397)         | 137/22                           | Insert Chart No. 3007 and Magenta limit as follows:<br>10° 40´.70N., 079° 48´.50E.<br>10° 40´.70N., 080° 01´.00E.<br>10° 50´.00N., 080° 01´.00E.<br>10° 50´.00N., 079° 48´.50E.<br>10° 40´.70N., 079° 48´.50E. |
|                        |                                  | Delete Chart No.3007 and Magenta limit as follows:<br>10° 40´.40N., 079° 49´.00E.<br>10° 40´.40N., 079° 59´.60E.<br>10° 47´.90N., 079° 59´.60E.<br>10° 47´.90N., 079° 49´.00E.<br>10° 40´.40N., 079° 49´.00E.  |



**Section – III****TEMPORARY AND PRELIMINARY NOTICES**

1. It is brought to the information to the users that same or all information contained in this Temporary Notices to mariner may have been included in the relevant ENC's.
2. New TPNMs are now part of ENC updates from 01 Oct 22 onwards.
3. All in force Temporary and Preliminary Notices are available for visualisation along with details of affected Charts and ENCs for mariners on **INDIAN WARNINGS INFORMATION AND NAVIGATION SERVICES (INDIA – WINS)** on [www.hydrobharat.gov.in](http://www.hydrobharat.gov.in).

**089 (T) (08/23) INDIAN OCEAN - NORTHERN PART - RAMA Buoys.**

Source: NOAA.

1. The research moored array of African - Asian - Australian Monsoon analysis and prediction (RAMA) buoys laid in following positions:-

| <b>Buoy No./Name</b> | <b>Position</b>                   |
|----------------------|-----------------------------------|
| RA185A               | 15° 01'.70N., 089° 02'.50E        |
| RA184A               | 00° 00'.00N., 089° 57'.60E        |
| <b>RA176A</b>        | <b>00° 58'.90S., 100° 22'.30E</b> |
| RA175A               | 01° 32'.90S., 080° 34'.00E        |
| <b>RA183A</b>        | <b>07° 56'.20N., 067° 07'.40E</b> |
| <b>RA182A</b>        | <b>04° 12'.60N., 066° 40'.90E</b> |
| RA181A               | 08° 07'.70S., 110° 32'.90E        |
| <b>RA180A</b>        | <b>00° 24'.70N., 067° 01'.50E</b> |
| <b>RA179A</b>        | <b>01° 34'.10S., 066° 48'.10E</b> |
| <b>RA177A</b>        | <b>04° 06'.90S., 057° 10'.70E</b> |
| <b>RA178A</b>        | <b>09° 24'.70S., 051° 07'.10E</b> |
| RT033                | 09° 46'.60N., 080° 16'.60E        |
| RT030                | 00° 47'.80S., 083° 06'.70E        |
| RT029                | 12° 34'.90S., 068° 50'.60E        |
| RT028                | 11° 50'.50S., 080° 18'.80E        |
| <b>RT036</b>         | <b>07° 06'.30S., 069° 57'.40E</b> |
| <b>RT035</b>         | <b>12° 11'.60S., 067° 13'.40E</b> |
| RT032                | 25° 06'.80N., 062° 20'.00E        |

2. **All Highlighted Buoys reflects changes in position of respective buoys from previous Notice.**
3. All vessels operating in vicinity are to maintain a clearance of 01 NM off the moored buoys.
4. All positions are in WGS 84 datum.

**Charts Affected - 21 - 31 (INT 756) - 32 (INT 754) - 33 (INT 755) - 291 - 315 - 316- 358 (INT 7394) - 7070 (INT 70) - 7071 (INT 71) - 7072 (INT 72) - 7073 (INT 73) - 7508 (INT 508) - 7701 (INT 701) - 7702 (INT 702) - 7703 (INT 703) - 7705 (INT 705) - 7706 (INT 706) - 7707 (INT 707) - 7708 (INT 708).**

**Former INTM 066 (T)/23 is cancelled.**

## **SECTION – IV**

### **MARINE INFORMATION**

#### **1. NAVTEX TRANSMISSION**

Status of MSI Promulgation by NAVTEX Stations is as follows:-

|                                    |               |
|------------------------------------|---------------|
| Mauritius (Cassis)                 | - Operational |
| Seychelles (Mahe)                  | - Operational |
| Myanmar (Yangon, Myeik, Kyau Phyu) | - Operational |

Following new NAVTEX stations along the Indian coast have commenced operations:-

| <b>INTERNATIONAL NATIONAL NAVTEX FREQUENCY - 518 kHz</b> |                     |           |                                  |      |      |      |      |      |
|--|---------------------|-----------|----------------------------------|------|------|------|------|------|
| <b>Sl.</b>   | <b>Station Name</b> | <b>B1</b> | <b>Broad Cast Timings in UTC</b> |      |      |      |      |      |
| (a)  | Veraval             | H         | 0110                             | 0510 | 0910 | 1310 | 1710 | 2110 |
| (b)  | Vengurla Point      | J         | 0130                             | 0530 | 0930 | 1330 | 1730 | 2130 |
| (c)  | Muttam Point        | L         | 0150                             | 0550 | 0950 | 1350 | 1750 | 2150 |
| (d)  | Porto Novo          | O         | 0220                             | 0620 | 1020 | 1420 | 1820 | 2220 |
| (e)  | Vakalpudi           | Q         | 0240                             | 0640 | 1040 | 1440 | 1840 | 2240 |
| (f)  | Balasore            | S         | 0300                             | 0700 | 1100 | 1500 | 1900 | 2300 |
| (g)  | Keating Point       | V         | 0330                             | 0730 | 1130 | 1530 | 1930 | 2330 |

#### **2. MISIDENTIFYING FISHING BOATS AS PIRATE SKIFFS**

All merchant vessels entering Indian EEZ are advised that dense fishing activity may be encountered off West Coast of India. Fishing is generally carried out by mechanized boats and single hull boats with outboard motors carrying 4-5 crews using long lines upto 50 NM from coast. The vessels traversing the nets are likely to be approached by fishing boats for safeguarding nets and lines and should not be mistaken as skiffs and PAG's. Masters of vessels to report any suspicious activity of fishing vessels immediately to MRCC (Mumbai) on telephone +91-22-24388065, 24316558, Email: - [mrcc-west@indiancoastguard.nic.in](mailto:mrcc-west@indiancoastguard.nic.in). Any suspicious activity of skiffs/ boats to be photographed if possible. Merchant vessels with armed guards on board are to report presence of guards to Indian Navy/Coast Guard while transiting Indian EEZ.

#### **3. DISPLAY ANOMALIES IN ECDIS**

(a) Mariners are advised that the International Hydrographic Organization (IHO) check data set shows that some ECDIS systems fail to display some significant underwater features in the standard display mode. The use of this check data set, issued through ENC service providers and available from the IHO website [www.iho.int](http://www.iho.int), to check the operation of ECDIS is strongly recommended. JRC has confirmed that certain versions of JRC ECDIS fail to display some types of wreck and obstructions, including stranded wrecks, in any display mode. Where JRC ECDIS is in use, paper charts should be the primary means of navigation until the ECDIS has been proved to operate correctly. See [www.jrc.co.jp/eng/product/marine/whatsnew/20120313/index.html](http://www.jrc.co.jp/eng/product/marine/whatsnew/20120313/index.html) for further information.

(b) Some Electronic Chart Display and Information Systems (ECDIS) may exhibit operating anomalies. The International Maritime Organization's (IMO) circular SN.1/CIRC.312 pages /imodocs.aspx (registration required) lists identified anomalies, Their characteristics and remedial advice. Mariners are reminded that they should access the International Hydrographic Organization (IHO) data presentation and performance check (DPPC) dataset (news links of <http://www.iho.int/srv1>) and ensure that all installed ECDIS units are checked.

#### 4. **SAFETY FAIRWAYS, RECOMMENDED ROUTES, TRAFFIC SEPARATION SCHEME**

The Director General Shipping has established Safety fairways, recommended routes and traffic separation scheme (TSS) in restricted Indian waters including the offshore development area to enhance safety of navigation. The details of coordinates are published in the fortnightly Indian Notices to Mariners.

(a) **Safety Fairways:** An area within which permits are not granted for the erection of oil or gas related structures. The use of a safety fairway is not usually mandatory, but is recommended. Safety fairways have been promulgated in and round offshore development area in Arabian Sea up to the Exclusive Economic Zone (EEZ) due to increased weather related marine accidents and dense traffic. These are mandatory for all Indian ships and vessels transiting through the ODA and recommendatory for all foreign flag ships and vessels irrespective of size.

(b) **Traffic Separation Schemes (TSS):** The TSS is mandatory for all Indian and foreign flag ships and vessels entering and leaving.

#### 5. **GAGAN SYSTEM COMMISSIONED FOR OPERATIONS**

The GAGAN System is now commissioned for safety of life, civil aviation, and en- route operations in addition to all other non-aviation applications. The GAGAN signal is being broadcasted through GSAT-8 and GSAT-10 with PRN127& 128 respectively. All the GPS users are requested to enable SBAS functionality in their receivers, configure it to receive PRN- 127& 128 and avail the benefits of GAGAN in terms of increased accuracy and reliability. There may be occasional signal outages due to system up-gradation activities.

#### 6. **USAGE OF THURAYA/ IRIDIUM AND SATELLITE PHONE**

(a) The use of Thuraya, Iridium and other such satellite phone is banned in India under Sec 6 of Indian Wireless Act and Sec 20 of Indian Telegraph Act. It is intimated to all shipping companies/ shipping agents that use of Thuraya/ Iridium and other such satellite phones are banned in Indian waters and seafarers should not use the same.

(b) Satellite phones can be used only after no objections certificate issued by department of telecommunication (DOT) on a case to case basis. The shipping agents should mandatorily intimate the details of person carrying Thuraya and the particulars of Thuraya, Iridium and other such sets in Pre Arrival Notification on Security (PANS).

(c) The unauthorized holders of Thuraya/ Iridium and other such Satellite phones can be prosecuted under Sec 6 of Indian Wireless Act and Sec 20 of Indian Telegraph Act.

#### 7. **CAUTIONARY NOTE**

There is a finite amount of lag between publication of large and small scale Indian Nautical Charts. To avoid uncertainty the mariners are advised to use large scale charts for coastal navigation wherever applicable and available. In addition, mariners are to refer large scale charts in conjunction with small scale charts in areas where both overlap during both planning and conduct of passage.

#### 8. **ADVISORY FOR ALL VESSELS NAVIGATING INDIAN WATERS**

(a) All vessels navigating in Indian waters are cautioned to keep a sharp look-out for fishing vessels and small crafts, as there have been several incidents of collisions with such vessels in the past resulting in loss of innocent lives as well as damage to property.

(b) It is further cautioned that all vessels need to exercise extreme care while navigating during hours of darkness as such vessels are generally of primitive built (wood/fibre/etc) due to which it may not be detected on ship's radar, especially during adverse weather conditions. Also, such vessels may not be properly lit, or sometimes, only one vessel may be lit among multiple vessels in a cluster.

(c) The general areas of concern on the west coast of India are the areas of convergence and divergence of traffic, mainly between Mangalore to Kanyakumari (Cape Comorin). Further, in these areas, additional caution needs to be exercised and wide berth be given to all such vessels.

- (d) All fishing vessels are also cautioned to avoid fishing in areas having high density traffic. All fishing vessels are also required to always maintain proper lookout by sight, hearing and by all available means and comply with all applicable provisions of Collision Regulations.

### **List of Indian Chart Agents**

|   |  |
|---|--|
| <b>OSA Books and Periodicals</b><br>R-246, Greater Kailash –I,<br>New Delhi - 110 048<br>Tel/Fax: +91-11-26418643, 46557337, Mob: 9971093992<br>Email: <a href="mailto:rpani246@gmail.com">rpani246@gmail.com</a>   | <b>M/s VDO Marine Instruments</b><br>Shanghar Building, PO Bag No – 645, 45/271,<br>Corner of Bristow & Naval Road,<br>Willingdon Island, Kochi – 682 003<br>Tel: +91 484 2667157 Fax: +91 484 2667121<br>Email: <a href="mailto:atmain@md4.vsnl.net.in">atmain@md4.vsnl.net.in</a>  |
| <b>M/s Global Charts &amp; Nav. Aids Pvt. Limited</b><br>1A, Goa Mansion, Ground Floor,<br>58, Dr. SunderlalBahl Path (Goa Street),<br>Fort, Mumbai - 400 001<br>Tel: 91-22-22626318, 22626380<br>Fax: 91-22-22621488<br>Email: <a href="mailto:sales@globalcharts.in">sales@globalcharts.in</a><br>Web: <a href="http://www.globalcharts.com.sg">www.globalcharts.com.sg</a>                   | <b>SMS Marine Private Ltd</b><br>505, Raheja Arcade, Sector 11, CBD Belapur,<br>Navi Mumbai – 400 614<br>Tel: +91-22-62233326, Fax: 022-67939504<br>Mobile: +91 9820 238 542<br>Email: <a href="mailto:info@c-map.co.in">info@c-map.co.in</a> ,<br><a href="mailto:raj.chakravorty@smsmap.com">raj.chakravorty@smsmap.com</a><br>Web: <a href="http://www.smsmaps.co.in">www.smsmaps.co.in</a> |
| <b>M/s C &amp; C Marine Combine</b><br>25 Bank Street, 1 <sup>st</sup> Floor, Fort Mumbai - 400 023<br>Tel: 91-22- 22660017/0018/0525/1937 Ext: 32<br>Tel: 91-22-22672143<br>Fax: 91-22-22670896<br>Email: <a href="mailto:vijay@ccmarine.in">vijay@ccmarine.in</a> , <a href="mailto:sales@ccmarine.in">sales@ccmarine.in</a>  | <b>M/s Global Marine Infratech Pvt. Ltd.</b><br>SikshaSandan, Ground Floor, Plot No. ND7, VIP Area,<br>IRC Village, Bhubaneswar – 751015<br>Tel: +91-674-2550599, Fax: +91-674-2551899<br>Cell: - +91-9337477799, 7077702499<br>Email: <a href="mailto:tusarkantha@gmiindia.in">tusarkantha@gmiindia.in</a><br>Web: <a href="http://www.gmiindia.in">www.gmiindia.in</a>                       |
| <b>M/s JM Maritime Services</b><br>24/24C Kavarana Building,<br>Ground Floor, WadiBunder,<br>P.D. Mellow Road, Mumbai – 400 009<br>Tel: +91 22 23736956, Fax: 022 - 23725083<br>Cell: +91 9820788357<br>Email : <a href="mailto:jmms@mtnl.net.in">jmms@mtnl.net.in</a> , <a href="mailto:charts@mtnl.net.in">charts@mtnl.net.in</a>   | <b>L. R. Marine Services</b><br>301, 3rd Floor, Biryas House,<br>265, PerinNariman Street, Fort,<br>Mumbai - 400 001.<br>Tel: +91-22-2269 1535, Fax: +91-22-66359148<br>Cell No: +91 8108926880/ +91 98214 60258<br>Email: <a href="mailto:lrcharts@gmail.com">lrcharts@gmail.com</a> , <a href="mailto:lrmarine@live.com">lrmarine@live.com</a>   |
| <b>M/s Lift o Marine</b><br>Allen's Mansion, C6, Nungi Station Road,<br>Bata Nagar, Kolkata – 700 140<br>Tel: +91 9836972027<br>Fax: 033 24924283<br>Email: <a href="mailto:sankar@liftmarine.org">sankar@liftmarine.org</a> , <a href="mailto:liftmarine77@gmail.com">liftmarine77@gmail.com</a><br>Web: <a href="http://www.liftmarine.org">www.liftmarine.org</a>                            | <b>IIC Technologies Limited</b><br>8-2-350/5/B-22, Road No. 3,<br>Banjara Hills, Hyderabad – 500 034, Telangana<br>Tel: +91 40 39144444<br>Fax: +91 40 39144455<br>Email: <a href="mailto:somnath.marthi@iictechnologies.com">somnath.marthi@iictechnologies.com</a><br>Web: <a href="http://www.iictechnologies.com">www.iictechnologies.com</a>  |
| <b>M/s Zenith Surveys (I) Pvt. Ltd.</b><br>Lakhani'sPlam View, First Floor,<br>Office No. 889, Sector 48, Nerul,<br>Navi Mumbai – 400 706<br>Tel/ Fax: +91-22- 27708011<br>Email: <a href="mailto:zenithsurveys703@gmail.com">zenithsurveys703@gmail.com</a><br><a href="mailto:nyvmane@yahoo.com">nyvmane@yahoo.com</a><br>Web: <a href="http://www.zenithsurvey.com">www.zenithsurvey.com</a> | <b>M/s CNC</b><br>Office No. S-12-92,<br>Haware's Centurion Premises Coop. Soc. Ltd<br>Plot no 88-91, Sector 19, NERUL,<br>Navi Mumbai – 400706<br>Tel: +91 22 22660017/ +91 22 49747575<br>Cell No: +91 9920654848/ +91 7506097212<br>Email: <a href="mailto:sales@emariner.net">sales@emariner.net</a>   |



|             |  |
|-------------|--|
| <b>318.</b> | <b>India West Coast - off Mumbai.</b> Charts IN 21 255 292 INT 7334. Athba progressing submarine cable repairs in area bounded within 19-00.65N 071-10.63E, 18-58.85N 071-10.63E, 18-58.87N 071-32.94E, 19-00.63N 071-32.94E. Wide berth of 01 nm requested.<br>2. Cancel this MSG 151830 UTC Apr 23.  |
| <b>319.</b> | <b>Andaman Sea.</b> Charts IN 33 405 7071 INT 7440. Isolated danger mark buoy (11-08.52N 093-30.35E) Unlit.  |
| <b>320.</b> | CANCEL NAVAREA VIII MSG 283/23, 199/23 AND THIS MSG  |
| <b>321.</b> | <b>Cancel NAVAREA VIII MSG 615/22, 423/22, 606/22, 1002/22, 702/22, 569/22, 571/22 and this MSG. INTM 069 070 071 072 073 07/23, 153 155 16/22 refers.</b>   |
| <b>322.</b> | <b>India West Coast - off Porbandar.</b> Charts IN 21 252 292 INT 7021. Firing by CG aircraft scheduled on 05 Apr 23 from 0400 to 0800 UTC in danger area bounded by 21-32N 069-24E, 21-17N 069-24E, 21-17N 069-06E, 21-32N 068-56E. Wide berth from area advised<br>2. Cancel this MSG 050900 UTC Apr 23.   |
| <b>323.</b> | <b>India West Coast.</b> Charts IN 22 2048 INT 752. Muttam point (08-07N 077-19E) NAVTEX transmitter switched off from 040430 to 051230 UTC Apr 23 for maintenance.<br>2. Cancel this MSG 051230 UTC Apr 23.   |
| <b>324.</b> | <b>India East Coast.</b> Charts IN 31 32 355 INT 7405. Rig move. Olinda star (16-25.10N 082-23.72E). Refer to 058(T) of INTM 05/23. Wide berth requested.  |
| <b>325.</b> | <b>India East Coast - off Visakhapatnam.</b> Charts IN 31 308 354 3002 INT 756. Experimental flight trials scheduled from 05 to 09 Apr 23 from 0430 to 1130 UTC in danger area bounded by 17-58.05N 083-42E, 17-40.95N 083-40.37E, 16-57.85N 083-21.52E, 16-45.07N 083-50.32E, 17-28.23N 084-38.13E. Wide berth from area advised.<br>2. Cancel this MSG 091230 UTC Apr 23.  |
| <b>326.</b> | <b>Arabian Sea.</b> Charts IN 22 293 7705 INT 705. SW Thuridur progressing seismic survey in area bounded by 15-00.07N 071-05.56E, 14-50.19N 070-49.55E, 17-46.52N 068-57.42E, 17-34.39N 068-25.03E, 20-20.90N 066-36.38E, 20-24.78N 068-04.64E, 15-28.19N 071-14.77E. Wide berth requested.<br>2. Cancel this MSG 181830 UTC Apr 23.  |
| <b>327.</b> | <b>India West Coast - off Mumbai.</b> Charts IN 21 255 292 INT 7021. Responder progressing cable installation works from 05 to 09 Apr 23 in areas bounded by (a) 18-51.01N 072-14.10E, 18-49.75N 072-08.27E, 18-40.93N 071-55.37E, 18-40.37N 071-57.38E, 18-47.70N 072-08.85E, 18-49.55N 072-09.65E, 18-50.62N 072-15.84E (b) 18-52.45N 072-25.90E, 18-51.89N 072-26.16E, 18-51.93N 072-26.98E, 18-54.16N 072-31.18E, 18-55.10N 072-30.86E(c) 18-56.48N 072-32.88E, 18-57.46N 072-34.44E, 18-57.16N 072-34.64E, 18-55.96N 072-33.07E. Wide berth requested.<br>2. Cancel this MSG 091830 UTC Apr 23. |
| <b>328.</b> | <b>India West Coast.</b> Charts IN 21 255 292 INT 7021. Aban VIII (18-33.63N 072-14.94E). Refer to 064(T) of INTM 06/23. Wide berth requested.   |
| <b>329.</b> | <b>India East Coast.</b> Charts IN 31 32 355 INT 7405. Rig move. West Polaris (16-19.35N 082-21.71E). Refer to 058(T)  |

|  |
|--|
| <b>329. Continued.</b><br>of INTM 05/23. Wide berth requested.   |
| <b>330. Andaman Sea - off Barren I.</b> Charts IN 41 473 INT 7031. Firing by CG aircraft scheduled on 10 Apr 23 from 0745 to 0945 UTC in danger area bounded within 11-50N to 12-00N and 093-40E to 094-10E. Wide berth from area advised.<br>2. Cancel this MSG 101045 UTC Apr 23.  |
| <b>331. India West Coast - off Mormugao.</b> Charts IN 22 293 7071 7072 7706 INT 706. Firing scheduled from 110130 to 121630 UTC Apr 23 in danger areas bounded by (a) 15-36N 071-50E, 14-39N 073-40E, 14-00N 074-00E, 13-30N 073-02E, 14-31N 071-24E (b) 17-23N 070-35E, 16-58N 071-25E, 16-24N 072-09E, 14-31N 071-24E, 16-15N 068-37E. Wide berth from area advised.<br>2. Cancel this MSG 121730 UTC Apr 23.   |
| <b>332. India West Coast - off Mumbai.</b> Charts IN 21 292 255 INT 7334. Al Marwa and Akash III progressing cable laying operation in areas bounded by (a) 19-06.26N 072-47.85E, 19-05.97N 072-48.01E, 19-05.76N 072-47.65E, 19-06.05N 072-47.48E (b) 19-00.28N 072-40.87E, 19-00.16N 072-41.20E, 18-59.46N 072-40.87E, 18-59.61N 072-40.55E (c) 18-57.53N 072-34.73E, 18-57.22N 072-34.85E, 18-57.01N 072-34.33E, 18-57.18N 072-34.33E. Wide berth requested.<br>2. Cancel this MSG 151830 UTC Apr 23.   |
| <b>333. Andaman Sea - off Havelock I.</b> Charts IN 41 473 INT 7031. Hydrographic survey being progressed from 09 to 17 Apr 23 in areas bounded by (a) 11-55.24N 092-52.36E, 11-54.48N 092-53.48E, 11-52.00N 092-52.36E, 11-52.39N 092-51.24E (b) 11-51.18N 092-50.06E, 11-50.42N 092-51.06E, 11-48.54N 092-50.06E, 11-49.30N 092-49.06.06E (c) 11-59N 093-15.24E, 11-59N 093-13.12E, 12-10N 093-13.12E, 12-10N 093-15.24E (d) 11-55.36N 093-09.48E, 11-55.36N 093-08.00E, 11-59.00N 093-08.00E, 11-59.00N 093-09.48E. Wide berth of 02 nm requested.<br>2. Cancel this MSG 171830 UTC Apr 23.   |
| <b>334. NAVAREA VIII - Warnings in force as on 06 Apr 2023</b><br><b>2021 Series</b> - 286 340 478 658 759 833<br><b>2022 Series</b> - 049 093 117 118 134 162 180 237 253 259 270 286 313 391 437 445 446 461 476 489 497 513 519 536 546 583 584 601 617 646 651 656 688 691 757 805 824 856 970 980 997 1011<br><b>2023 Series</b> - 004 036 037 063 064 071 104 112 116 126 144 161 162 172 178 179 188 205 224 231 235 236 238 239 240 241 242 243 253 254 272 273 276 280 284 289 293 297 301 302 305 307 308 314 315 316 317 318 319 324 325 326 327 328 329 330 331 332 333<br>(A) NAVAREA VIII warnings less than 42 days promulgated via safetynet.<br>(b) Text of NAVAREA VIII warning inforce including those which no longer broadcast available in <a href="http://www.hydrobharat.gov">www.hydrobharat.gov</a><br>2. Cancel NAVAREA VIII MSG 317/23 and this MSG 141000 UTC Apr 23. |
| <b>335. Indian Ocean.</b> Charts IN 7071 7707 INT 707. Space debris predicted in area bounded by 00-40N 091-28E, 00-45N 091-02E, 01-37N 091-12E, 01-32N 091-38E from 070300 UTC to 071000 UTC Apr 23.<br>2. Cancel this MSG 071100 UTC Apr 23.   |
| <b>336. India West Coast – Mormugao.</b> Charts IN 22 214 257 293 2022 INT 7022. Firing scheduled on 13 Apr 23 from 0330 to 0730 UTC in danger sector extending upto 15 nm between bearing 220 to 260 from 15-24.7N 073-47.05E. Wide berth from area advised.<br>2. Cancel this MSG 130830 UTC Apr 23.   |
| <b>337. India West Coast – Okha.</b> Charts IN 21 202 203 2068 INT 7319. Firing scheduled on 13 Apr 23 from 0930 to 1230 UTC in danger sector extending upto 12 nm within bearing 300 and 020 from 22-28.75N 069-04.05E. Wide berth from area advised.<br>2. Cancel this MSG 131330 UTC Apr 23.  |
| <b>338. India East Coast – Portonovo.</b> Charts IN 357 3025 INT 7397. NAVTEX (11-30.22N 079-46.24E) transmitter will be switched off from 110030 UTC to 121230 Jan 22 for maintenance.<br>2. Cancel this MSG 121230 UTC Apr 23.   |
| <b>339. India East Coast - off Sagar I.</b> Charts IN 31 301 351 INT 7419. Firing by CG aircraft scheduled on 13 Apr 23 from 0430 to 1030 UTC in danger area bounded within 20-37N to 20-52N and 088-30E to 089-00E. Wide berth from area advised.<br>2. Cancel this MSG 131130 UTC Apr 23.  |
| <b>340. India East Coast - off Paradip.</b> Charts IN 31 352 INT 756. Experimental flight trials scheduled from 12 to 14 Apr 23 from 0430 to 0630 UTC and 0830 to 1030 UTC in danger area bounded by 19-56.48N 086-32.92E, 17-58.75N 086-18.92E, 17-46.95N 087-39.4E, 19-49.27N 087-53.98E. Wide berth from area advised.<br>2. Cancel this MSG 141130 UTC Apr 23.   |
| <b>341. India West Coast - off Mormugao.</b> Charts IN 22 293 7705 INT 752. Subsurface firing scheduled 12, 13 Apr 23 from 0230 to 1530 UTC in danger areas bounded by (a) 17-23N 070-35E, 16-58N 071-25E, 16-24N 072-09E, 14-31N 071-24E, 16-15N 068-37E (b) 17-15N 071-40E, 17-15N 072-00E, 16-55N 072-00E, 16-55N 071-40E. Wide berth from area advised.<br>2. Cancel this MSG 131630 UTC Apr 23.   |
| <b>342. India West Coast - off Mangalore.</b> Charts IN 22 217 272 2359 INT 7350. Hydrographic survey being progressed in area bounded within 12-47N to 13-04.7N and 074-43.7E to 074-52.5E. Wide berth requested.<br>2. Cancel this MSG 251830 UTC Apr 23.  |



|  |
|--|
| <b>343. India West Coast - off Mangalore.</b> Charts IN 22 217 272 2359 INT 7350. Hydrographic Survey being progressed in area bounded within 12-47N TO 13-04.7N and 074-25.3E to 074-43.8E. Wide berth requested.<br>2. Cancel this MSG 301830 UTC May 23.  |
| <b>344. India West Coast - off Daman.</b> Charts IN 21 207 254 INT 7331. Lidar buoy mobilized and vessel Kohinoor III progressing survey in area bounded by 20-29.09N 071-56.87E, 20-29.06N 071-59.16E, 20-26.89N 071-59.12E, 20-26.93N 071-56.82E. Wide berth requested.<br>2. Cancel this MSG 311830 UTC May 23.   |
| <b>345. Andaman Sea - off Barren I.</b> Charts IN 41 473 INT 7031. Firing by CG aircraft scheduled on 14 Apr 23 from 0745 to 0945 UTC in danger area bounded within 11-50N TO 12-00N AND 093-40E TO 094-10E. Wide berth from area advised.<br>2. Cancel this MSG 141045 UTC Apr 23.  |
| <b>346. Lakshadweep Sea - Androth I.</b> Charts IN 22 268 2007 2023 INT 752. Firing scheduled on 14 Apr 23 from 0330 to 1030 UTC in danger area bounded within 10-48.4N TO 10-49.4N AND 073-38E TO 073-39.6E. Wide berth from area advised<br>2. Cancel this MSG 141130 UTC Apr 23.  |
| <b>347. India East Coast - off Puducherry.</b> Charts IN 32 357 INT 7397. Oceanic Sirius progressing seismic survey in area bounded by 11-45.29N 080-40.48E, 11-45.31N 080-08.69E, 11-47.94N 080-02.09E, 12-00.27N 080-02.12E, 12-12.71N 080-08.97E, 12-12.72N 080-40.50E. Tow length 10km. Wide berth requested.<br>2. Cancel this MSG 071830 UTC May 23  |
| <b>348. India East Coast - off Machilipatnam.</b> Charts IN 31 355 391 INT 7405. Fugro sea giant, Teja and resco-4 progressing geophysical and geotechnical survey in areas bounded by (a) 16-25.57N 082-01.01E, 16-24.5N 082-04.1E, 16-23.48N 082-03.72E, 16-24.66N 082-00.39E (b) 16-23.26N 081-56.26E, 16-21.24N 081-56.88E, 16-20.93N 081-55.8E, 16-22.99N 081-55.14E. Wide berth requested.<br>2. Cancel this MSG 041830 UTC May 23.  |
| <b>349. CANCEL NAVAREA VIII MSG 188/23, 340/23 and this MSG.</b>   |
| <b>350. India West Coast.</b> Charts IN 21 255 292 INT 7021. Vivekanand-1 (19-39.54N 071-44.40E), victory driller (19-20.91N 071-24.51E). Refer to 064(T) of INTM 06/23. Wide berth requested.   |
| <b>351. India West Coast - off Mumbai.</b> Charts IN 211 255 292 INT 7334. Mt Godavari progressing marine route survey in area bounded by 19-07.99N 072-48.67E, 19-07.92N 072-48.54E, 19-07.91N 072-48.51E, 19-07.91N 072-48.49E, 19-07.91N 072-48.46E, 19-07.89N 072-48.37E, 19-07.78N 072-48.12E, 19-07.68N 072-47.98E, 19-07.64N 072-47.94E, 19-07.58N 072-47.92E, 19-07.55N 072-47.92E, 19-07.46N 072-47.92E, 19-07.41N 072-47.92E, 19-07.33N 072-47.89E, 19-07.27N 072-47.85E, 19-06.67N 072-47.15E, 19-06.53N 072-46.82E, 19-06.51N 072-46.72E, 19-06.51N 072-46.61E, 19-06.53N 072-46.52E, 19-06.55N 072-46.45E, 19-06.55N 072-46.35E, 19-06.55N 072-46.34E, 19-06.53N 072-46.27E, 19-06.13N 072-45.42E, 19-05.50N 072-44.01E, 19-04.06N 072-40.76E. Wide berth requested.<br>2. Cancel this MSG 261830 UTC Apr 23. |
| <b>352. India West Coast - off Mumbai.</b> Charts IN 21 255 292 INT 7021. DSV wilchief-1 progressing structural work of ONGC platforms in vicinity of 18-34.93N 072-14.43E, 19-31.77N 071-18.07E, 19-22.40N 071-21.62E, 18-08.44N 072-22.08E, 19-07.75N 071-59.94E, 19-10.02N 071-46.57E, 19-32.26N 071-23.98E, 19-20.79N 071-21.95E, 19-00.58N 072-11.96E, 18-55.55N 072-02.49E, 18-34.11N 072-13.45E, 19-20.06N 072-01.26E, 19-18.27N 071-58.58E, 19-18.80N 071-24.95E, 19-16.69N 071-25.54E. Wide berth requested.<br>2. Cancel this MSG 151830 UTC May 23.   |
| <b>353. India West Coast - off Mumbai.</b> Charts IN 21 211 255 292 INT 7021. Sea star 7 progressing cable route survey in areas bounded by 19-07.21N 072-48.40E, 19-06.33N 072-48.82E, 19-01.94N 072-37.49E, 19-02.23N 072-37.35E. Wide berth requested.<br>2. Cancel this MSG 101830 UTC May 23.   |
| <b>354. Arabian Sea.</b> Charts IN 22 273 294 INT 752. SW Cook progressing seismic survey in area bounded by 07-40.23N 073-19.72E, 07-42.6N 072-55.53E, 15-13.78N 070-05.76E, 15-34.98N 070-50.95E, 07-45.4N 074-03.8E. Wide berth requested.<br>2. Cancel this MSG 261830 UTC Apr 23.   |
| <b>355. India West Coast - off Mumbai.</b> Charts IN 21 255 292 INT 7334. Posh Natuna, Posh Arcturus and Posh Paglima progressing pipeline survey in vicinity of 19-07.75N 071-59.94E, 19-10.02N 071-46.57E, 19-22.40N 071-21.62E, 19-20.79N 071-21.95E, 19-31.77N 071-18.07E, 19-32.26N 071-23.98E, 18-34.93N 072-14.43E, 18-33.72N 072-17.64E. Wide berth requested.<br>2. Cancel this MSG 151830 UTC May 23.  |
| <b>356. India West Coast - off Mumbai.</b> Charts IN 21 211 255 INT 7334. Ena habitat will carry out hookup activities at (a) 19-07.79N 071-59.93E from 15 Apr to 07 May 23 (b) 19-10.07N 071-46.56E from 08 May to 28 May 23. Wide berth requested.<br>2. Cancel this MSG 281830 UTC May 23.  |
| <b>357. India West Coast - off Mumbai.</b> Charts IN 21 254 255 292 INT 7334. Fugro Mapper will carry out seabed survey  |

|  |
|--|
| <b>357. Continued.</b>   |
| in vicinity of 19-45.44N 071-11.23E, 19-10.07N 072-11.23E, 19-34.72N 071-23.16E, 18-58.58N 071-17.51E, 18-34.96N 072-14.45E, 19-22.45N 071-21.47E, 19-12.88N 072-06.79E, 19-10.62N 070-57.72E, 18-36.1N 071-01.6E, 20-08.68N 071-44.94E, 19-31.79N 071-17.39E, 18-16.44N 072-22.79E, 18-45.65N 072-19.21E from 16 Apr to 15 May 23. Length of tow 150 meters from stern. Wide berth requested. |
| 2. Cancel this MSG 151830 UTC May 23.  |
| <b>358. Andaman Sea - off Barren I.</b> Charts IN 41 473 INT 7031. Firing by cg aircraft scheduled on 17 Apr 23 from 0745 to 0945 UTC in danger area bounded within 11-50N TO 12-00N and 093-40E to 094-10E. Wide berth from area advised.   |
| 2. Cancel this MSG 171045 UTC Apr 23.  |
| <b>359. India East Coast - off Gopalpur.</b> Charts IN 31 305 352 353 391 INT 7413. Army air defence firing scheduled from 18 to 20 APR 23 from 0130 to 0830 UTC and 0930 to 1430 UTC in danger area bounded by (a) 19-14.6N 084-53.7E (b) 19-07.39N 085-35.94E (c) 18-33.61N 084-53.74E and arc of 41 nm radius joining point b and c. Wide berth from area advised.                          |
| 2. Cancel this MSG 201530 UTC Apr 23.  |
| <b>360. India East Coast - off Sagar I.</b> Charts IN 31 301 351 INT 7419. Firing by cg aircraft scheduled on 18 Apr 23 from 0430 to 1030 UTC in danger area bounded within 20-37N to 20-52N and 088-30E to 089-00E. Wide berth from area advised.   |
| 2. Cancel this MSG 181130 UTC Apr 23.  |
| <b>361. India West Coast - off Daman.</b> Charts IN 21 209 254 292 INT 7331. Firing by cg aircraft scheduled on 18 Apr 23 from 0230 to 1130 UTC in danger area bounded within 20-26N to 20-40N and 072-27E to 072-40E. Wide berth from area advised.   |
| 2. Cancel this MSG 181230 UTC Apr 23.  |
| <b>362. India East Coast - off Visakhapatnam.</b> Charts IN 31 354 INT 7408. Experimental flight trials scheduled from 17 to 18 Apr 23 from 0530 to 0930 UTC in danger area bounded by 18-04.12N 083-42.92E, 16-57.85N 083-21.52E, 16-45.07N 083-50.32E, 17-42.08N 084-53.27E. Wide berth from area advised.   |
| 2. Cancel this MSG 181030 UTC Apr 23.  |
| <b>363. India West Coast.</b> Charts IN 21 255 292 INT 7021. Aban III (19-34.71N, 071-23.15), Gd Chaaya (18-32.07N, 072-13.98). Refer to 064(T) of INTM 06/23. Wide berth requested.   |
| <b>364. Navarea VIII - Warnings in force as on 14 Apr 2023</b>   |
| <b>2021 Series</b> - 286 340 478 658 759 833   |
| <b>2022 Series</b> - 049 093 117 118 134 162 180 237 253 259 286 313 391 437 445 446 461 476 489 497 513 519 536 546 583 584 601 617 646 651 656 688 691 757 805 824 856 970 980 997 1011  |
| <b>2023 Series</b> - 004 036 037 063 064 071 104 112 116 126 144 161 162 172 178 179 205 224 231 235 238 239 240 241 242 243 253 254 272 273 276 280 284 289 293 297 301 302 307 314 315 318 319 324 326 328 329 332 333 334 342 343 344 345 346 347 348 350 351 352 353 354 355 356 357 358 359 360 361 362 363   |
| (a) NAVAREA VIII warnings less than 42 days promulgated via safetynet.   |
| (b) Text of NAVAREA VIII warning in force including those which no longer broadcast available in <a href="http://www.hydrobharat.gov.in">www.hydrobharat.gov.in</a>  |
| 2. Cancel this MSG 211000 UTC Apr 23.  |

**SECTION – VI**  
**CORRECTIONS TO SAILING DIRECTIONS (PILOTS)**

NIL

7.1

**SECTION – VII**  
**CORRECTIONS TO LIST OF LIGHTS**

NIL

**SECTION – VIII**  
**CORRECTION TO LIST OF RADIO SIGNALS**

**INP 31(1), 2019**

*(Last correction: Edition No. 23 dated 01 Dec 2022)*

NIL

**INP 31(2), 2019**

*(Last correction: Edition No. 07 dated 01 Apr 2023)*

NIL

**INP 31(5), 2017**

*(Last correction: Edition No. 24 dated 16 Dec 2021)*

NIL

**INP 31(6), 2018**

*(Last correction: Edition No. 07 dated 01 Apr 2023)*

NIL

## **SECTION – IX**

### **REPORTING OF NAVIGATIONAL DANGERS**

#### **Appeal to all Mariners**

1. Mariners at sea whilst on passage, or whilst entering / leaving ports / Harbour and other waterways, are requested to look out for new or suspected dangers to navigation, changes in aids to navigation, or corrections to published charts and Sailing Directions. Whenever any such changes / dangers are observed, mariners are requested to notify the same to the Chief Hydrographer to the Government of India at the following address: -

National Hydrographic Office  
107-A, Rajpur Road,  
Dehradun - 248001  
(Uttarakhand), India

e-mail : [msis-inho@navy.gov.in](mailto:msis-inho@navy.gov.in), [inho@navy.gov.in](mailto:inho@navy.gov.in)  
Fax No. : +91-135- 2748373  
Web : [www.hydrobharat.gov.in](http://www.hydrobharat.gov.in)

#### **Instructions for filling up IH 102**

2. Kindly follow the instructions below in order to help the Hydrographic Office (the recipient) to quickly issue NAVAREA warning / Notice to Mariners for the benefit of all other mariners at sea.

#### **Position Reporting**

3. Accurate position or knowledge of position error is of great importance. Latitude and Longitude should only be used to specify position details when they have been fixed by GPS or Astronomical Observations. A full description of the method, equipment, time and datum (WGS 84/ Everest/ Other) used should be given. When position is defined by sextant angles or bearings (true or magnetic to be specified), more than two bearings should be used in order to provide a redundancy check. Distances observed by Radar should be corrected for index errors. Where position is derived after the event, from other observations and/or Dead Reckoning, the methodology of deriving the position should be included.

4. **Paper Charts.** A copy/tracing of largest scale chart is the best medium for forwarding details, the alterations and additions being shown thereon in red, but adequate details from the chart must be traced in black ink to enable the amendments to be fitted correctly.

5. **ENCs.** A Screen shot of largest scale usage band ENC with the alterations and additions being shown thereon in red. If it is to report an issue with the display of an ENC, a screen shot of the affected cell should be sent along with details of the ECDIS make and version in use at the time.

#### **Depth Reporting**

6. When soundings are obtained using echo sounders, the echo sounding trace should be duly annotated with date, times, position, depths, etc., and forwarded with the IH102. It is important to state whether the echo sounder is set to register depths below the surface or below the keel; in the latter case the vessel's draught should be given. Time and date should be given in order that corrections for the height of the tide may be made where necessary. The make, name and type of echo sounder should also be given.

7. For modern echo sounders that use electronic 'range gating', care should be taken that the correct range scale and appropriate gate width are in use. Older electro-mechanical echo sounders frequently record signals from echoes received back after one or more rotations of the stylus have been completed. Thus with a set whose maximum range is 500m, an echo recorded at 50m may be from depths of 50m, 550m or even 1050m. Soundings recorded beyond the set's nominal range can usually be recognised by the following:

- (a) The trace being weaker than normal for the depth recorded;
- (b) The trace passing through the transmission line;
- (c) The feathery nature of the trace.

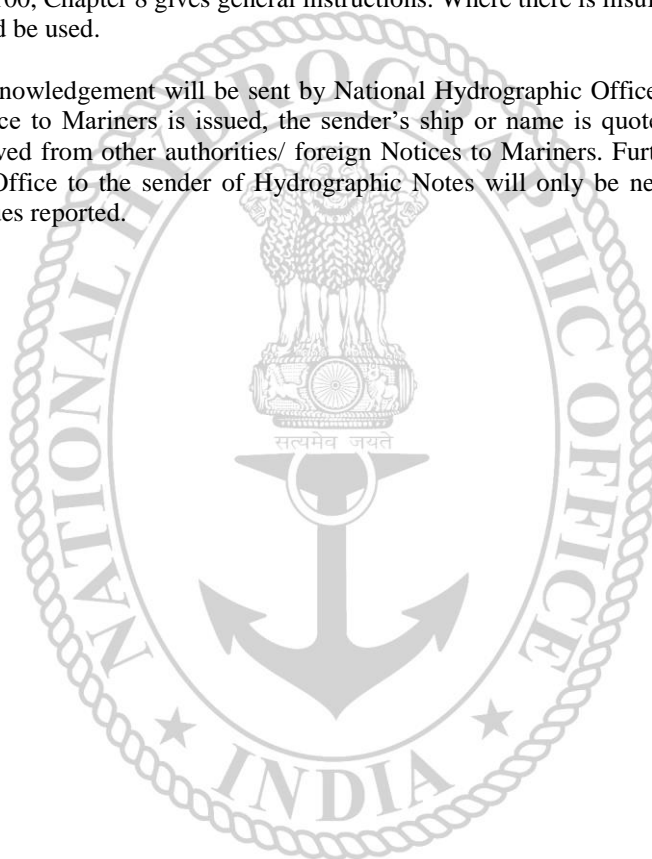
As a check that apparently shoal soundings are not due to echoes received beyond the set's nominal range, soundings should be continued until reasonable agreement with charted soundings is reached. However, soundings received after one or more rotations of the stylus can still be useful and should be submitted if they show significant differences from the charted depths. Efforts should be made to identify and negate false echoes if any. The Mariners Handbook (NP100) and Notice 15 Special Edition of Notice to Mariners may be consulted.

8. Reports which cannot be confirmed or are lacking in certain details should not be withheld. Shortcomings should be stressed and any firm expectation of being able to check the information on a succeeding voyage should be notified.

9. Reports of **shoal soundings**, uncharted dangers and aids to navigation out of order should, at the mariner's discretion, also be made by radio to the nearest coast radio station. The draught of modern tankers in such that any uncharted depth under 30 meters or 15 fathoms may be of sufficient importance to justify a radio message.

10. Changes to Port information should be forwarded on Form IH.102A together with form IH.102. Form 102A contains the information required for Sailing Directions and should be used as an *aide memoir*. The Mariners Handbook, NP100, Chapter 8 gives general instructions. Where there is insufficient space on the forms an additional sheet should be used.

**Please Note:** - An acknowledgement will be sent by National Hydrographic Office for Hydrographic Notes, on receipt. When a Notice to Mariners is issued, the sender's ship or name is quoted as authority unless the information is also received from other authorities/ foreign Notices to Mariners. Further, communication from National Hydrographic Office to the sender of Hydrographic Notes will only be necessary to verify unusual features or abnormal values reported.



| HYDROGRAPHIC NOTE  |   |                                  |                                       | IH.102<br>(Revised 2012)        |                                    |
|--|---|----------------------------------|---------------------------------------|---------------------------------|------------------------------------|
| For Forwarding information for Indian Charts, ENC's and Publications and reporting of ENC related issues |   |                                  |                                       |                                 |                                    |
| Date   |   |                                  | Ref. Number                           |                                 |                                    |
| Name of the Ship or Sender   |   |                                  |                                       |                                 |                                    |
| Address  |   |                                  |                                       |                                 |                                    |
| Tel/FAX/E-mail address   |   |                                  |                                       |                                 |                                    |
| Observation Date   |   |                                  | Time (UTC/IST)                        |                                 |                                    |
| Object of Changes Observed<br>(Tick appropriate)   | <input type="checkbox"/> Bathymetry       |                                  | <input type="checkbox"/> Nav. Dangers |                                 | <input type="checkbox"/> Nav. aids |
|  | <input type="checkbox"/> Designated Areas |                                  | <input type="checkbox"/> Others       |                                 |                                    |
| Geographical Position<br>(See Instructions Overleaf)   | Latitude                                  |                                  | Longitude                             |                                 |                                    |
| Position Method  | <input type="checkbox"/> DGPS             | <input type="checkbox"/> GPS     | <input type="checkbox"/> Radar        | <input type="checkbox"/> Others |                                    |
| Datum Used   | <input type="checkbox"/> WGS84            | <input type="checkbox"/> Everest | <input type="checkbox"/> Others       |                                 |                                    |
| Charts Affected  |   |                                  | Edition                               |                                 |                                    |
| Latest Edition of Indian Notices to Mariners Held  |   |                                  |                                       |                                 |                                    |
| Tracing/Plot/Photograph if enclosed  |   |                                  |                                       |                                 |                                    |
| ENCs Affected  |   |                                  |                                       |                                 |                                    |
| Latest Update Disk Held  |   |                                  |                                       |                                 |                                    |
| Publication Affected   |   |                                  | Edition                               |                                 |                                    |
| Page No./Light No. etc   |   |                                  |                                       |                                 |                                    |
| Details:   |   |                                  |                                       |                                 |                                    |
|  |   |                                  |                                       |                                 |                                    |
|  |   |                                  |                                       |                                 |                                    |
|  |   |                                  |                                       |                                 |                                    |
| Limitations if any in Reporting the Changes Above  |   |                                  |                                       |                                 |                                    |
| Details of Documents/Photos attached:  |   |                                  |                                       |                                 |                                    |
| Signature of the Master/Reporter/Observer  |   |                                  |                                       |                                 |                                    |



| HYDROGRAPHIC NOTE FOR PORT INFORMATION<br>(To accompany Form IH.102) |          | IH.102A<br>(Revised 2012) |           |
|--|----------|---------------------------|-----------|
| Date   |          | Ref. No.                  |           |
| Name of the Ship or Sender   |          |                           |           |
| Address  |          |                           |           |
| Tel/Fax/E-mail   |          |                           |           |
| <b>1. NAME OF PORT</b>   |          |                           |           |
| Location   | Latitude |                           | Longitude |
| <b>2. GENERAL REMARKS</b>  |          |                           |           |
| Principal activities and trade                                       |          |                           |           |
| Number of ships and tonnage handled per year                         |          |                           |           |
| Maximum size of draught of vessel handled                            |          |                           |           |
| Copy of Port handbook (if available)                                 |          |                           |           |
| <b>3. ANCHORAGES</b>   |          |                           |           |
| Type / Purpose   |          |                           |           |
| Minimum depth at anchorage   |          |                           |           |
| Shelter afforded   |          |                           |           |
| Holding ground   |          |                           |           |
| Recommended pilotage to the anchorage                                |          |                           |           |
| <b>4. PILOTAGE</b>   |          |                           |           |
| Authority for request  |          |                           |           |
| Embarkation position   |          |                           |           |
| Regulations  |          |                           |           |
| Documents to be provided   |          |                           |           |
| Recommended pilotage to approach of Harbour and Berths               |          |                           |           |
| Information on VTMS  |          |                           |           |
| <b>5. DIRECTIONS</b>   |          |                           |           |
| Entry and Berthing Information                                       |          |                           |           |
| Tides (Height)   |          |                           |           |
| Tidal Stream Information   |          |                           |           |
| Wind Speed and Direction   |          |                           |           |
| Navigational Aids (Beacons / Buoys / Lights / Etc.)                  |          |                           |           |
| <b>6. POLLUTION CONTROL</b>  |          |                           |           |
| Local regulation in force (If Any)                                   |          |                           |           |
| <b>7. TUGS</b>   |          |                           |           |
| Number available / Tug type  |          |                           |           |
| Maximum HP / Bollard pull  |          |                           |           |

|  |  |
|--|--|
| <b>7. TUGS (Continued)</b>   |  |
| Requesting authority   |  |
| Availability timing / Communication  |  |
| Hiring charges   |  |
| <b>8. BERTHING AND WHARVES</b>   |  |
| Type & Number of berths available  |  |
| Length   |  |
| Depth alongside  |  |
| Facilities available   |  |
| Procedure for requesting berth & hiring charges                                    |  |
| <b>9. CARGO HANDLING</b>   |  |
| Containers   |  |
| Lighters & Ro-Ro etc.  |  |
| <b>10. CRANES</b>  |  |
| Brief details of Max. lifting capacity, Height of boom at wharf level and Outreach |  |
| Container handling facilities  |  |
| <b>11. BRIDGES</b>   |  |
| Vertical clearance   |  |
| <b>12. REPAIRS</b>   |  |
| Hull machinery and underwater  |  |
| Ship and Boat yards  |  |
| Docking or Slipway facilities (Size/ Dimensions of vessels handled)                |  |
| Hards and Ramps  |  |
| Divers / Diving assistance   |  |
| <b>13. SERVICES</b>  |  |
| Radio / FAX / Telephone / Internet etc.  |  |
| Medical  |  |
| Quarantine   |  |
| Consul   |  |
| Ship chandlery and Stevedores  |  |
| Compass adjustment   |  |
| Tank cleaning  |  |
| Hull painting  |  |
| Police / Ambulance / Firefighting (Fixed and Mobile facilities)                    |  |
| Nav. Warning and Weather bulletin  |  |
| Garbage disposal / Waste oil disposal  |  |
| Helicopter landing facilities  |  |

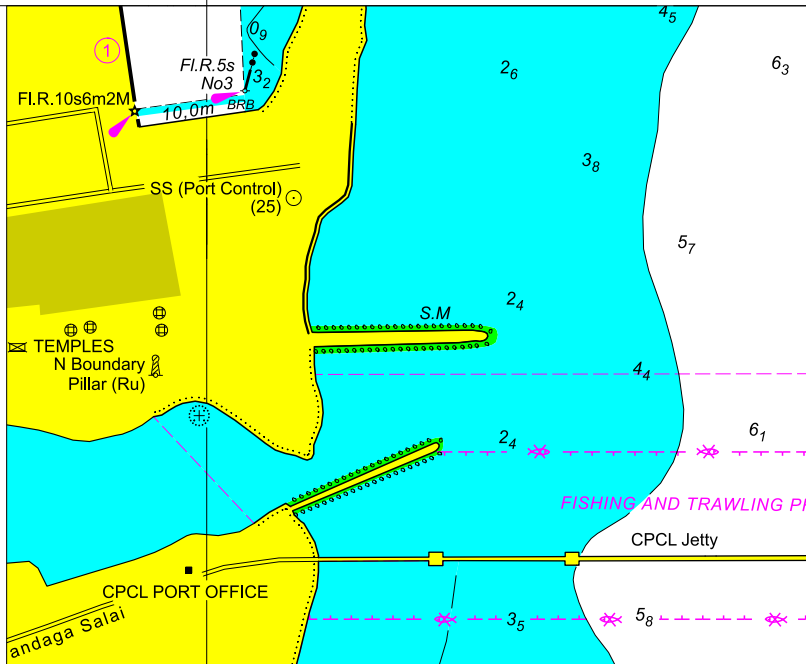
|  |  |
|--|--|
| <b>14. RESCUE &amp; DISTRESS</b>   |  |
| Salvage, Lifeboat, Life guards, etc  |  |
| <b>15. SUPPLIES</b>  |  |
| Fuel (Type, Quantities & Method of delivery)   |  |
| Fresh water (Method of delivery and Rate of supply)  |  |
| Provisions   |  |
| Chart agents   |  |
| <b>16. COMMUNICATIONS</b>  |  |
| Road, Rail and Air services available  |  |
| Nearest airport or airfield  |  |
| Port Radio and Information Service (Frequencies and Operating Hours)                           |  |
| <b>17. PORT AUTHORITY</b>  |  |
| Designation, Address, Telephone, E-mail Address and Website                                    |  |
| <b>18. SECURITY</b>  |  |
| Security of ports / International Ship and Port Facility Security (ISPS) compliance            |  |
| Custom and Immigration Regulations in force  |  |
| <b>19. SMALL CRAFT FACILITIES</b>  |  |
| Information and facilities for small craft, yachts visiting the port                           |  |
| Yacht clubs, berths etc  |  |
| <b>20. SHORT LEAVE</b>   |  |
| <b>21. CLUBS RECREATION</b>  |  |
| Information Kiosk (Location)   |  |
| Foreign Exchange firms / Banks (Within / Near Port Area)                                       |  |
| Places of interest near port   |  |
| <b>22. VIEWS</b>   |  |
| Photographs(Duly annotated) of the approaches, leading marks, the entrance to the harbour etc. |  |
| <b>23. ADDITIONAL DETAILS</b>  |  |
| Any other information considered to be useful for the mariners                                 |  |
| <b>SIGNATURE OF THE OBSERVER / REPORTER / MASTER</b>   |  |

10°  
50'

79°51'

Block Correction for Chart No. 3033

10°  
50'



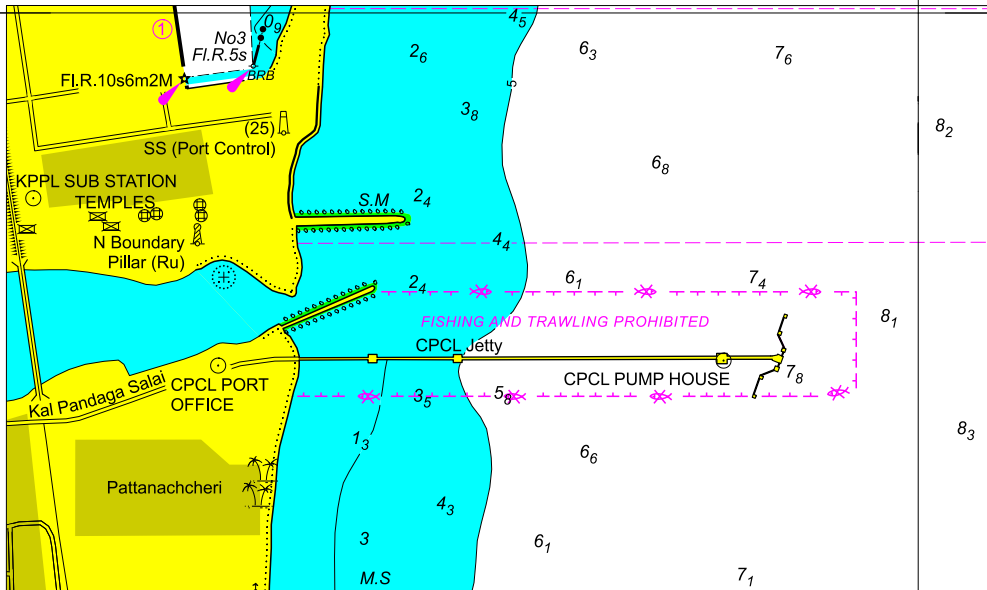
79°51'E

To accompany Indian Notices to Mariners No. 087/2023

10°  
50'

Block Correction for Chart No. 3033

10°  
50'



To accompany Indian Notices to Mariners No. 087/2023

79°52'E



**FOR 24 X 7 SAR ASSISTANCE IN INDIAN SRR**

**Email: [mrcc-west@indiancoastguard.nic.in](mailto:mrcc-west@indiancoastguard.nic.in)**

**NATION WIDE SAR TELE: 1554 (LAND LINE)**

**INMARSAT C (IOR) 441907210 CODE: 43 (TOLL FREE)**

**AFTN: VABBYXYC**